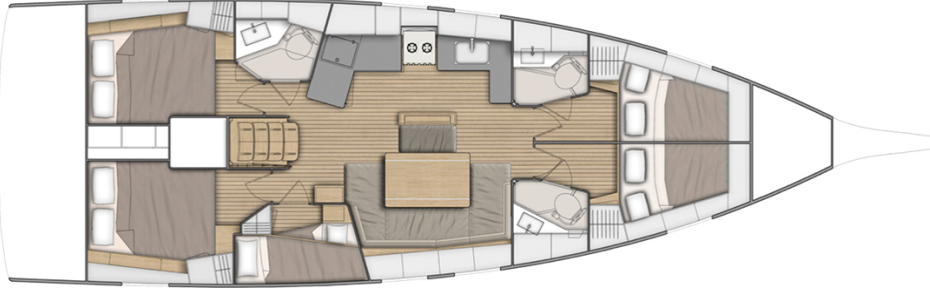


BREEZY
Beneteau Oceanis 46.1
2023

Tekne Adı / Boat Name / Name des Boots
Model / Fabrikat
Yıl / Year / Jahr



Teknik Özellikler:

Tam Boy	14.60 m
En	4.50 m
Su Çekimi	2.35 m
Ağırlık (boş)	10.6 ton
Su	570 lt
Mazot	200 lt
Yelken Alanı	94.42 m ²
Klasik Ana Yelken, tam balen	
Sarma Flok (Kendinden Tramolalı)	
Asimetrik balon yelken kullanılabılır (ekstra)	
Motor	Yanmar 80 hp
Kamara	5
Yatak	10
WC / Banyo	3

2 Dümen simidi

Baş manevra pervanesi

1 x Elektrikli vinç

Tik havuzluk

3 x Elektrikli marin tuvalet

Kalorifer, mazotlu

300 W Inverter (12V DC - 220V AC)

Güneş Paneli (680W)

1 x Elektrikli buzdolabı, 1 x dondurucu

Fusion Radio, USB, Bluetooth

1 x Raym. Axiom 7 haritalı GPS, dümende

1 x Raymarine i70s gösterge

(Hız, Derinlik, Rüzgar)

Raymarine p70s otopilot

Raymarine Ray 73 VHF Telsiz + AIS

Ultra çapa, 27 kg

Ultra fırdöndü, bosa kancası

100 m x 10 mm zincir

Quick 1000 W ırgat

Zincir sayacı (dümende)

2.70 m. yumuşak tabanlı şişme bot

Honda 2.3hp, 4 zamanlı motor

Bimini güneşlik

Serpinti körüğü

Havuzluk minderleri

Yüzme platformu ve duş

Pasarella

Can Salı (12 kişilik)

12 x Otomatik şişme can yeleği

1 x Çocuk can yeleği

Barometre, Termometre

Kılavuz kitaplar

Elektronik ve kağıt haritalar

220 V şarj sistemi

Sıcak su

Technical Data:

Overall Length	14.60 m
Beam	4.50 m
Draft	2.35 m
Displacement	10.6 tons
Water	570 lt
Fuel	200 lt
Sail Area	94.42 m ²
Fully battened mainsail with lazy bag	
Furling jib (Self Tacking)	
Gennaker available (optional extra)	
Engine	Yanmar 80 hp
Cabins	5
Berths	10
Heads / Showers	3

2 Steering wheels

Bow thruster

1 x Electric winch

Teak cockpit

3 x Electric marine toilets

Warm air heating, diesel

300 W Inverter (12V DC - 220V AC)

Solar Panel (680W)

1 x Electric fridge, 1 x Freezer

Fusion Radio, USB, Bluetooth

1 x Raym. Axiom 7 chartplotter, at the cockpit

1 x Raymarine i70s display

(Speed, Depth, Wind)

Raymarine p70s autopilot interface

Raymarine Ray 73 VHF Radio + AIS

Ultra anchor, 27 kg

Ultra flip swivel, chain grab

100 m x 10 mm chain

Quick 1000 W windlass

Chain counter (at the cockpit)

2.70 m. soft bottom dinghy

Honda 2.3hp, 4 stroke outboard

Biminitop

Sprayhood

Cockpit cushions

Swimming platform with shower

Gangway

Life raft (12 person)

12 x Automatic inflatable life jackets

1 x Child life jacket

Barometer, Thermometer

Pilot books

Electronic and paper charts

220 V recharging system

Hot water

Technische Daten:

Länge über alles	14.60 m
Breite	4.50 m
Tiefgang	2.35 m
Verdrängung	10.6 tonnen
Wassertank	570 L
Dieseltank	200 L
Segelfläche	94.42 m ²
Latten-Grosssegel m. Lazy Bag	
Rollflock (selbstwendend)	
Gennaker verfügbar (Optionale Extra)	
Motor	Yanmar 80 PS
Kabinen	5
Kojen	10
WC und Dusche	3

2 Steuerrad

Bugstrahlruder

1 x elektrische Seilwischen

Teak Cockpit

3 x Elektrische Marine-WC

Warmluftheizung, diesel

300 W Wechselrichter

Solarpanel (680W)

1 x elektr. Kuehlaggregat, 1 x Gefrierschrank

Fusion Radio, USB, Bluetooth

1 x Raym. Axiom 7 Kartenplotter, im Cockpit

1 x Raymarine i70s Anzeige

(Geschwindigkeit, Tiefe, Wind)

Raymarine p70s Autopilot Interface

Raymarine Ray 73 VHF Radio + AIS

Ultra-Anker, 27 kg

Ultra-Schwenker, Kettenhaken

100 m x 10 mm Kette

Quick 1000 W Ankerwinde

Kettenzähler (im cockpit)

2.70 m. weichen Boden Beiboot

Honda 2.3PS, 4-Takt-Außenbord

Biminitop

Sprayhood

Cockpitkissen

Badeplattform mit Dusche

Gangway

Rettingsinsel (12 Person)

12 x Auto. aufblasbare Schwimmweste

1 x Kinder-Schwimmweste

Barometer, Thermometer

Pilot Bücher

Elektronische und Papierkarten

Batterieladegeraet

Warmwasser